



AUTOMATED
PALLET
LABELING

ROTOR-LONG

APPLICATOR FOR PALLET LABELING WITH THE XPA 936

- Perfect printing of GS1-compliant DIN A5 labels and precise application on 1 or 2 sides with the fully automatic Print & Apply System XPA 936
- Easy integration into the pallet line
- Up to 200 pallets/hour
- Remote operability thanks to web interface
- Handles demanding 24/7 applications

NOVEX 
SOLUTIONS

ROTOR-LONG APPLICATOR

TECHNICAL DETAILS

- Precise application of up to 2 DIN A5 labels according to GS1 standard on the stopped pallet
- Cost-efficient, fully automatic & robust solution
- Perfect 300 dpi print quality, also suitable for harsh logistics environment
- Uncomplicated integration: directly into the production line, quickly ready to use
- Installation: left or right of the conveyor belt



The label is printed with the XPA 936, the vacuum pad takes the label and the Rotor-Long applicator applies it accurately to the stationary/stopped pallet with a swing motion.



MAXIMUM USER FRIENDLINESS

Easy and fast change of label and ribbon material. Multi-color and freely rotatable display with intuitive menu structure.



INTELLIGENT PRINT & APPLY

Web interface enables remote access and configuration from any PC or via mobile devices, such as smartphones and tablets. Variety of flexibly customizable interfaces.



MAXIMUM UPTIME

The industrial robustness of the XPA 936, together with easy maintenance and quick material change, ensures maximum uptime.



AVOIDING ERRORS

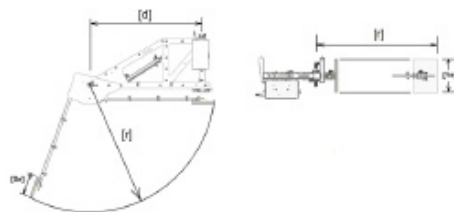
Automatic adjustments and transfer of settings after print head or material changes reduce manual handling and therefore the risk of errors.

100%

TOOL-FREE MAINTENANCE

100% tool-free maintenance and replacement of wear parts reduces downtime and increases productivity.

Specifications	Length of the rotating arm	850 mm
	Max. rotation angle of the applicator arm	115°
	The applicator arm moves by a predefined stroke length	Different stroke lengths for respective start signal
	Compressed air	6 bar, consumption: max. 40 l/min; 5.2 l/cycle
	Weight of the applicator	14,5 kg
	Weight of the label pad (150*210 mm)	0,5 kg
	Two different start signal inputs on the 8 IO board for two-sided pallet labeling	
	Applicator control via interface cable between XPA 936 and applicator	



Movement volume of the applicator arm and the plunger

(Xe): Width of the plunger (label X width).
 (Ye): Pad length (label Y length)
 Max. Angle of rotation: 115°
 (r): 800 mm + Xe/2
 (d): 800 mm

The information contained in this document is believed to be reliable, but NOVEXX Solutions makes no representations as to the accuracy or correctness of the data. As with all other data, this information should be independently validated with regard to the specific end-user conditions in order to ensure that the recommended identification solution complies with the relevant requirements and regulations. © 2024 Novexx Solutions GmbH, all rights reserved. Any trademarks and/or trade names of third parties used in these materials are the property of their respective owners.

www.novexx.com



NOVEXX SOLUTIONS

Member of Possehl Identification Solutions
www.possehl-identification.com