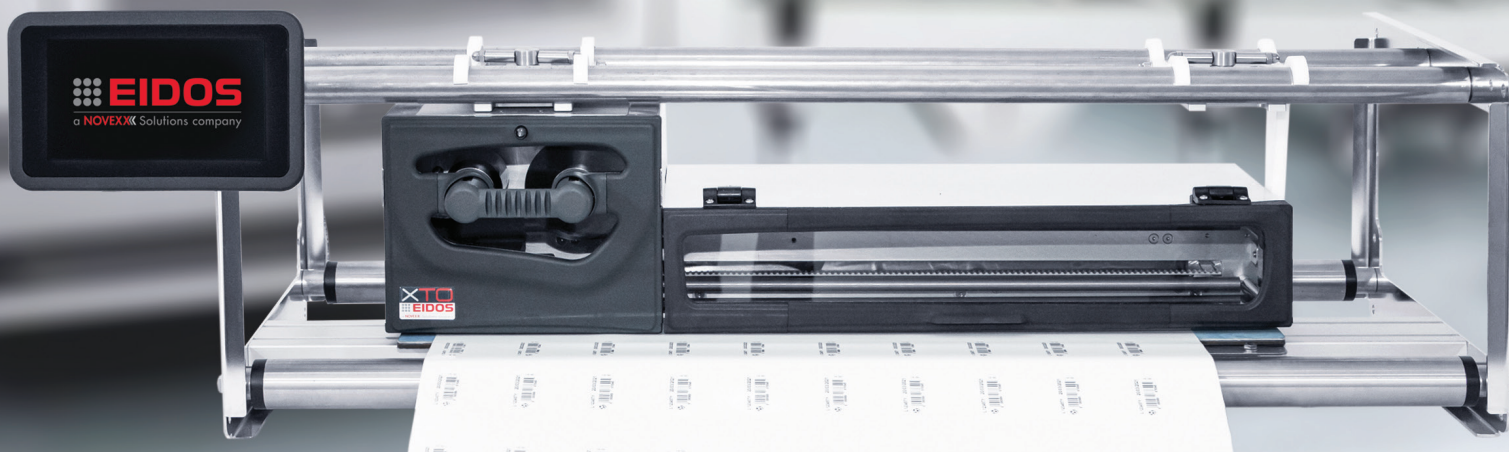
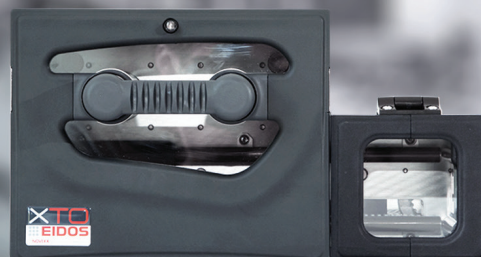
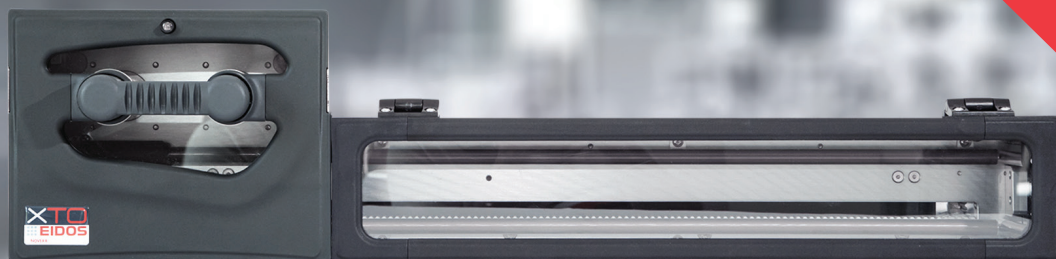


INTERMITTENT






XTO 2i.20/40/60

53 x 200/400/600 MM PRINT AREA

- Perfect for integration into intermittent packaging systems
- Best quality overprinting with up to 600 mm print length
- For all applications in the food, pharmaceutical, personal care, automotive or other industries

TECHNICAL SPECIFICATIONS XTO2i.20/40/60

		200 MM PRINT LENGTH		400 MM PRINT LENGTH		600 MM PRINT LENGTH	
							
Printing	Printing Mode	Intermittent					
	Technology	Thermal Transfer					
	Resolution	300 dpi; 12 dots/mm					
	Speed	300 mm/sec (within safe operting area); Up to 800 mm/sec (feasibility check necessary)					
	Print rate	Up to 45 prints/min with 200 mm print length		Up to 25 prints/min with 400 mm print length		Up to 18 prints/min with 600 mm print length	
		Check safe operating area for other label lengths					
	Maximum print area	53 x 200 mm (W*L)		53 x 400 mm (W*L)		53 x 600 mm (W*L)	
	Ribbon length	1200 mtr; on 1" plastic core; roll diameter max. 110 mm					
	Ribbon Save	Yes					
	Ribbon qualities	Wax-resin; resin					
	Fonts	Windows true type; Arial internal; various heights and shapes; unicode and UTF-8 code					
Print data	Barcodes	1- and 2-dimensional barcodes; datamatrix; QR codes; databar; PDF417					
	Logos	BMP; JPG; TIFF; PNG; GIF; PCX formats					
	Codes	All kind of date code, serial numbers, production codes, ...					
Label creation	Label design software; EIDOS Easycode design software; printer language programming						
Controller/ HMI	7" full colour capacitive touchscreen Powered via ethernet Incl. intuitive user interface. For status info, print layout WYSIWYG; multilingual, diagnostics, system settings						
	Dimensions	215*133*33 mm (W/H/D)					
	Cable length	1,5 mtr (controller to printer)					
Signal interfaces	25 D-sub Connector for IO connection to packaging machine						
Data Interfaces printer	Ethernet 10/100; 2x USB 2.0 host RS 232 (9 pins, baudrate 115200)						
Physical data printer	Power supply	Input voltage 85–265; input frequency 50/60 Hz					
	Dimensions	225*178*334 mm (W/H/D)		225*178*541 mm (W/H/D)		225*178*736 mm (W/H/D)	
	Environmental	Operation temp 5°– 40° C; humidity 10 – 60% non condensing					
Options	IP 65 power supply unit Multiple selection of mounting brackets for integration in packaging machines Web User Interface (on HMI, PC or mobile device)						

16a.EN.DIR.0124.V01