

TRUST THE EXPERTS

NOVEXX Solutions hardware, consumables, software, and service for best results



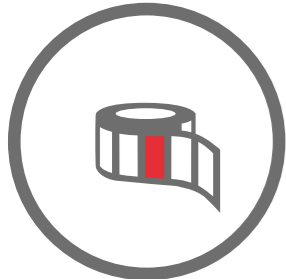
Easy integration

The experts from NOVEXX Solutions support you in the integration process and beyond. High-performance hardware is one thing, no less important is the smooth integration into your production environment. We take time to understand your processes and needs in order to be able to offer your company the optimal solution.



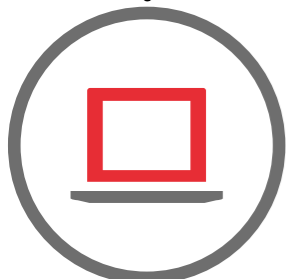
Durable hardware solutions

As a manufacturer, NOVEXX Solutions offers you a broad portfolio of hardware solutions for your labeling needs, such as Print & Apply Systems, Labelers, Label Printers, and Pallet Labeling Systems – developed and manufactured in Germany. Trust in the many years of experience of NOVEXX Solutions – Your Partner for Labeling Solutions.



High-quality consumables

For over 50 years, we are producing labels. Blank labels for variable print data, labels with security features, your logo, or full color labels with your individual design – we supply quality labels tailored to your requirements. For print applications, we also offer a huge range of thermal transfer ribbons for our own hardware as well as from other manufacturers to meet your application needs and achieve perfect print results.



Data management software TRACE-it®

TRACE-it, the fully integrated software solution for central data and process management, completes the NOVEXX Solutions portfolio. It optimizes marking processes in manufacturing and logistics companies across many different industries – whether it be the marking of single products, packages, or entire pallets.

Novexx Solutions GmbH DEUTSCHLAND

Ohmstrasse 3
D-85386 Eching
Tel. +49 (0)8165 925 299
info.deutschland@novexx.com

Novexx Solutions S.A.S. FRANCE

Tel. +33 (0)825 82 61 52
serviceclient@novexx.com

Novexx Solutions B.V. NEDERLAND

Tel. +31 (0)30 760 90 10
info.nederland@novexx.com

Novexx Solutions B.V. BELGIE

Tel. +32 (0)2 377 8002
info.belgie@novexx.com

Novexx Etiketleme Sistemleri Tic. A.Ş. TÜRKIYE

Tel. +90 216 564 81 81
info.turkiye@novexx.com

Novexx Solutions GmbH ITALIA

Tel. +39 0331 1855511
info.italia@novexx.com

Novexx Solutions GmbH FILIAL SVERIGE

Tel. +46 (0)31 68 30 40
info.sverige@novexx.com

manroland India Pvt. Ltd. INDIA

Tel. +91 (11) 47002900
info.india@novexx.com

Novexx Solutions USA

Tel. +1 937 306 8543
info.usa@novexx.com

Novexx Solutions ASIA

Tel. +86 (021) 2215 7665
info.asia@novexx.com

Novexx Solutions GmbH POLSKA

Tel. +48 (0)605957108
info.polska@novexx.com



XTD

TOP DOWN LABELING SOLUTION

The information contained herein is believed to be reliable but NOVEXX Solutions makes no guarantee concerning the accuracy or correctness of the data. The information, like any other, should be confirmed independently for the particular end user conditions to ensure the proposed solution meets the relevant requirements and regulations. © 2019 NOVEXX Solutions GmbH, All rights reserved. Third-party trademarks and/or trade names that may be used herein are the property of their respective owners.

THE MODULAR LABELING SOLUTION

With the XTD Top & Down Solution you are able to label a product from the top as well as from below in one step. That way, you can make sure that all important information on your product finds its place.

GROWING REQUIREMENTS FOR PRODUCT LABELING

In many branches, particular in the food industry, the requirements for the labeling of products grow. This means in most cases: More and more information has to be placed on a product. Starting with the manufacturer's information, the best-before date or the date of consumption through to lists of ingredients, filling quantities or the labeling of allergens.

At the same time, labels have to be attractive in order to meet marketing and sales requirements. More than ever it's essential to stand out in the mass of products and to be attractive for consumers. Our solution: Labeling on the top and bottom side.

MARKING FROM ABOVE AND BELOW. WITH OR WITHOUT VARIABLE DATA. IN ONE STEP.

With the XTD Top & Down Solution, you can easily apply all relevant information on your product. The system labels products in only one process step from the top and below. A labeler applies for instance a preprinted label from the top - immediately afterwards a Print & Apply System below the conveyor belt prints variable data on a further label and dispenses it from below to the product. That is how you can save important time and make sure that your product meets all labeling requirements.



Here decorative labels (ex. for promotion labeling) as well as labels with variable data can be printed and applied.

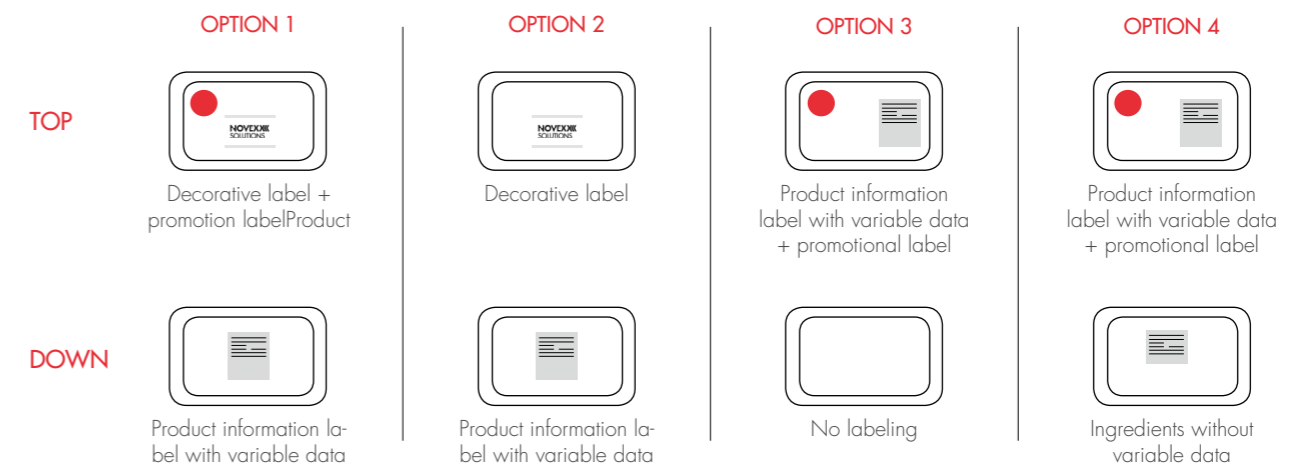
Labels with variable data and necessary product information ensure compliance with labeling regulations.

INDIVIDUAL MODULARIZATION – ADAPTED TO YOUR NEEDS

Thanks to its unique flexibility, the XTD Top & Down Solution can be adapted individual to your needs. The system is modular extendable and can grow with your demands.

ONE SOLUTION – MANY OPTIONS

The NOVEXX Solutions XTD Top & Down Solution can combine pure labelers (XLS series) as well as Print & Apply Systems (ALX and XPA series) in different configurations.



APPLICATION EXAMPLE

THE CHALLENGE

A fresh food packaging has to contain all variable product information on the bottom side. On the top side, a decorative label as well as optional a promotional label has to be applied.

THE SOLUTION

A Top & Down configuration with two XLS Labelers on top and an ALX or XPA Print & Apply System on bottom.

THE BENEFITS

Space-saving design
Due to the compact size, the XTD Top & Down Solution is easily integrable.

First-class quality and precision
Like all NOVEXX Solutions solutions the XTD offers a perfect print quality and a high dispensing accuracy

High productivity
Reliable labeling from top and bottom in just one step.

Easy maintenance
The fast access to all important service parts ensure an uncomplicated maintenance.

Low downtimes
Thanks to very long run time, fast material change and low downtime, a high production and product safety is guaranteed. An optional tandem mode increases this productivity even more.

